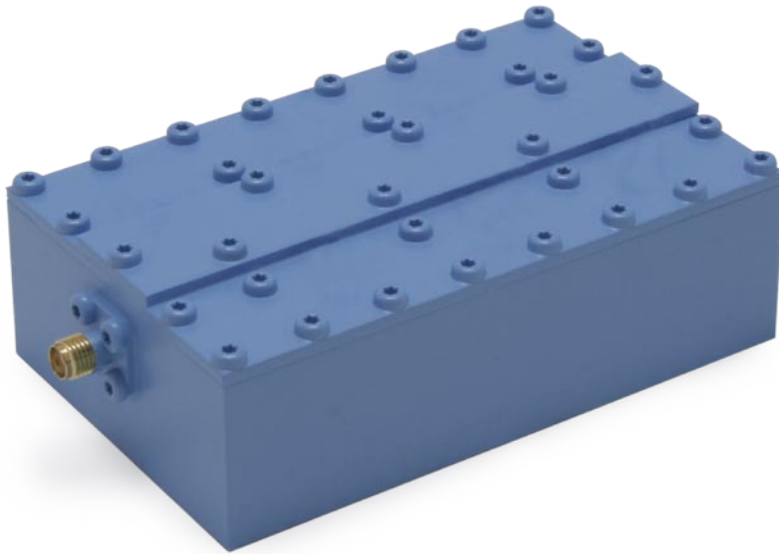
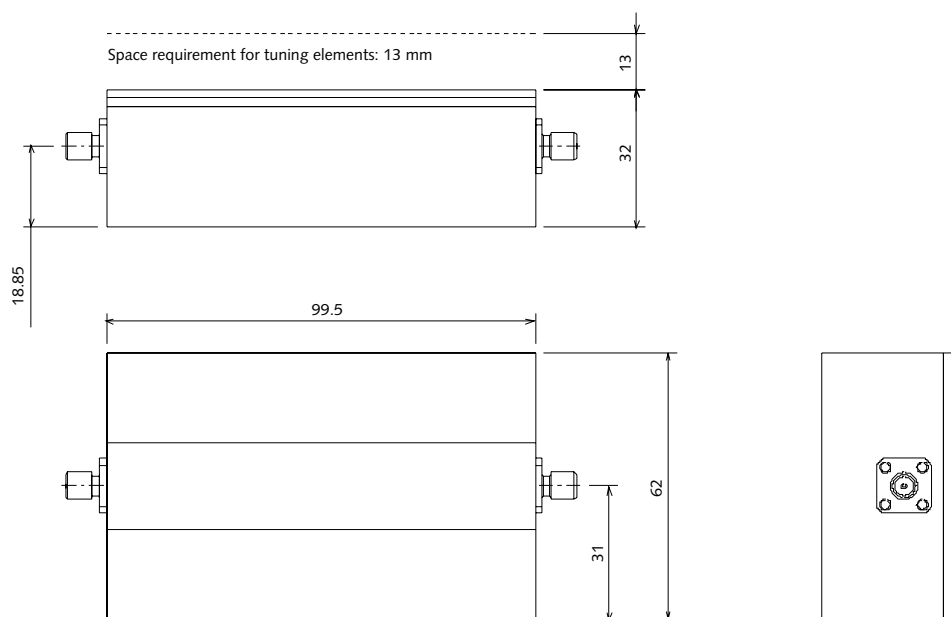


# CW-BSF-2496-2506-E1-M2



Type	Band Stop Filter
Pass Band	DC-2488.5 and 2513.5–3000 MHz
Insertion Loss	< 2.5 dB
Return Loss	> 10 dB
Rejection	> 30 dBc @ 2496–2506 MHz
Power handling	20 W rms
Connectors	2 x SMA (f)



# CW-BSF-2496-2506-E1-M2

