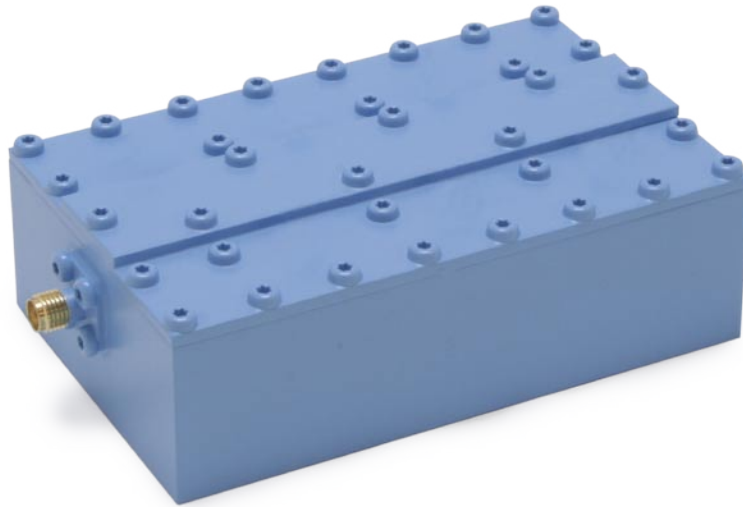
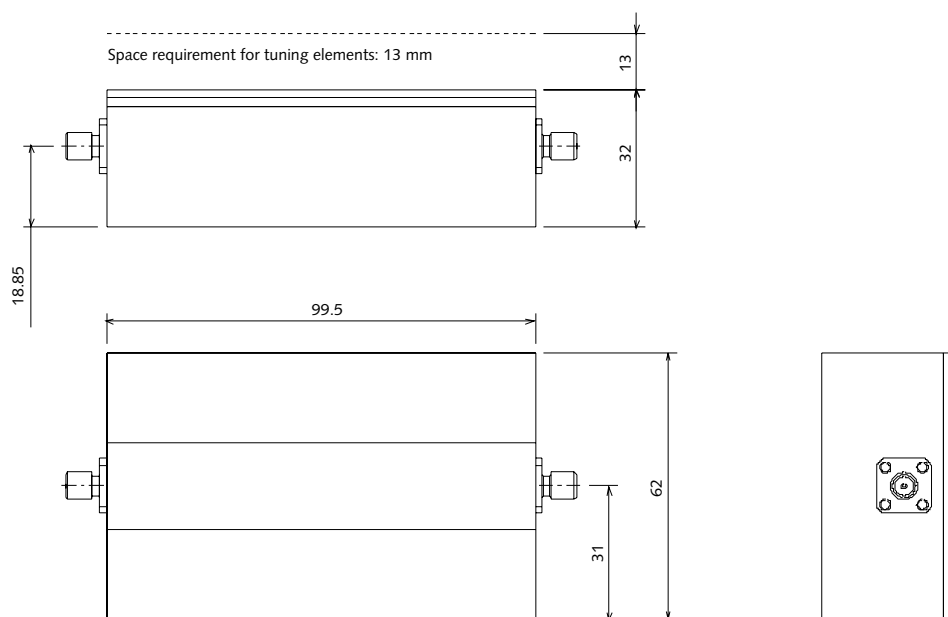


CW-BSF-2680-2690-E1-M2



Type	Band Stop Filter
Pass Band	DC-2672.5 and 2697.5–3000 MHz
Insertion Loss	< 2.5 dB
Return Loss	> 10 dB
Rejection	> 30 dBc @ 2680-2690 MHz
Power handling	20 W rms
Connectors	2 x SMA (f)



CW-BSF-2680-2690-E1-M2

